

# Paw Paw Fire Station

832 s gremps st | paw paw, michigan 49079



exterior

Project Delivery  
Construction Management

Project Size  
19,600 SF

Use Type  
Municipal - New Build

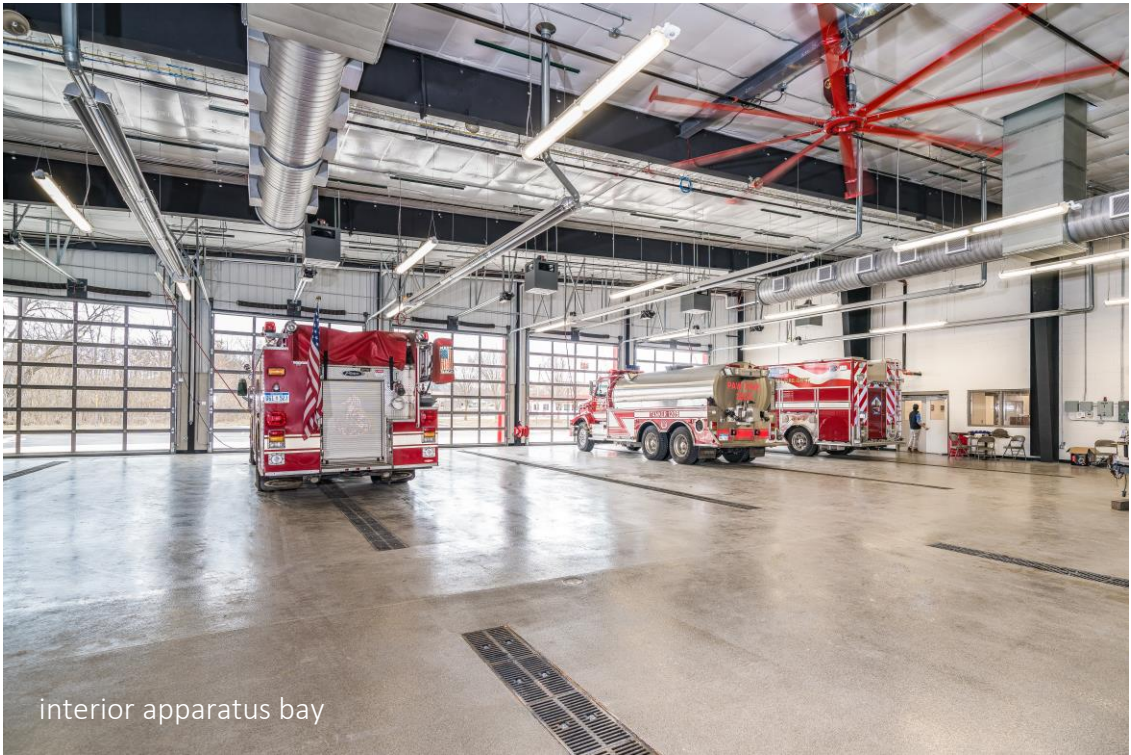
Owner  
Paw Paw Fire Department  
115 E Berrien St  
Paw Paw, MI 49079

Architect  
Schley Nelson  
4200 S 9th St,  
Kalamazoo, MI 49009

Paw Paw Township and members of the fire department worked with Schley Nelson Architects and AVB to design and build a new 19,600 SF fire station. The new facility is twice the size of their former space and includes additional storage for updated resources, as well as a new site location that allows them to control the near-by traffic light for faster and safer responses.

The new fire station features 5 two-way apparatus bays, two offices, a large education center, a workout area for the 100% volunteer fire fighters, a state-of-the-art decontamination room, lounge space, and a new kitchen and outdoor patio area.

The new fire station was constructed with three different framing materials, a pre-engineered building was used for the apparatus bay, conventional steel framing was used for the education room, offices, and kitchen space, and masonry was used for the hose tower. AVB had to display excellent communication between subcontractors to keep each section of the building on schedule.



interior apparatus bay



interior recreation space



BUILD SOMETHING BETTER.

4200 w centre ave | portage, mi 49024 | 269.323.2022 | [avbinc.com](http://avbinc.com)

municipal